

Series 18

Technical Data

Machining centers with workpiece changing device

Technical Data	FZ 18 S basket	FZ 18 FX basket	FZ 18 FX MAGNUM chain	DZ 18 FX MAGNUM chain
Drilling capacity in St 60 with inserted drill	Ø 42 mm	Ø 42 mm	Ø 42 mm	2 x Ø 42 mm
Thread cutting	M 30	M 30	M 30	2 x M 30
Milling capacity in St 60	500 cm ³ /min	500 cm ³ /min	500 cm ³ /min	2 x 350 cm ³ /min
Tool places	20	20	60	2 x 30
Tool taper	SK 40	SK 40	HSK-A 63	HSK-A 63
Max. tool diameter	65 mm	65 mm	78 mm	78 mm
Max. tool diameter if adjacent places are free	180 mm	180 mm	140 mm	140 mm
Max. tool length	220 mm	220 mm	380 mm	380 mm
Max. tool weight	8 kg	8 kg	8 kg	8 kg
Tool change time approx.	0.9 s	0.9 s	0.9 s	0.9 s
Chip-to-chip time approx.	1.9 s	1.9 s	2.2 s	2.2 s
Infinitely variable speed range	12,000 rpm	12,000 rpm	12,000 rpm	12,000 rpm
Spindle drive Siemens	18 kW	18 kW	25 kW	2 x 25 kW
Max. torque Siemens	140 Nm	140 Nm	140 Nm	2 x 140 Nm
Spindle drive Fanuc	22 kW	22 kW	22 kW	2 x 22 kW
Max. torque Fanuc	140 Nm	140 Nm	140 Nm	2 x 140 Nm
Diameter front spindle bearing	70 mm	70 mm	70 mm	70 mm
Tool clamping	8,000 N	8,000 N	20,000 N	20,000 N
Spindle distance	–	–	–	400 mm
Travel X- / Y- / Z-axis	730 / 550 / 630 mm	730 / 550 / 630 mm	830 / 530 / 450 mm	630 / 530 / 450 mm
Feed force X- / Y- / Z-axis	5,000 / 5,000 / 10,000 N	5,000 / 5,000 / 10,000 N	7,000 / 7,000 / 12,000 N	7,000 / 7,000 / 12,000 N
Rapid feed rate X- / Y- / Z- axis	75 m/min	75 m/min	75 m/min	75 m/min
Acceleration X- / Y- / Z- axis	10 / 10 / 10 m/s ²	10 / 10 / 10 m/s ²	10 / 14 / 16 m/s ²	10 / 14 / 16 m/s ²
Direct path measuring system in all axis	•	•	•	•
Fixed table	–	–	–	–
Clamping surface	1,400 mm x 570 mm	–	–	–
T-Slots	2 x 18 H 12	–	–	–
Aligning groove and center hole	1 x 18 H8	–	–	–
Table load capacity	1,200 kg	–	–	–
2-axis NC tilt rotary table				
NC swivel range	–	+/- 110°	+/- 110°	+/- 110°
Face plate diameter	–	280 mm	280 mm	280 mm
Mounting hole pattern	–	M16 x Ø 15 H7 x 50 mm	M16 x Ø 15 H7 x 50 mm	M16 x Ø 15 H7 x 50 mm
Load capacity	–	320 kg	320 kg	2 x 320 kg
Speed 4th / 5th axis	–	30 / 45 rpm	30 / 45 rpm	30 / 45 rpm
Media line to the adapter face plate	–	6	6	2 x 6
1-axis NC tilt rotary table				
NC swivel range	–	–	–	–
Clamping surface	–	–	–	–
Chip conveyor, ejection height	1,050 mm	1,050 mm	1,050 mm	1,050 mm
Coolant device, container capacity	150 l	150 l	150 l	150 l
Total connected power approx.	20 kVA	27 kVA	25 kVA	38 kVA
Machine weight approx.	8.0 t	8.5 t	11 t	11 t
Floor space approx.	7.3 m ²	8.7 m ²	9 m ²	9 m ²
Air connection	6 bar	6 bar	6 bar	6 bar
Central lubrication	•	•	•	•

Options	FZ 18 S basket	FZ 18 FX basket	FZ 18 FX MAGNUM chain	DZ 18 FX MAGNUM chain
More powerful spindle drive				
Infinitely variable speed range up to	12,000 rpm	12,000 rpm	12,000 rpm	12,000 rpm
Max. torque	180 Nm	180 Nm	180 Nm	2 x 180 Nm
More powerful spindle drive				
Infinitely variable speed range up to	10,500 rpm	10,500 rpm	–	–
Spindle drive Siemens	26 kW	26 kW	–	–
Max. torque Siemens	300 Nm	300 Nm	–	–
Spindle drive Fanuc	31.5 kW	31.5 kW	–	–
Max. torque Fanuc	300 Nm	300 Nm	–	–
Drilling capacity in St 60 with inserted drill	Ø 50 mm	Ø 50 mm	–	–
Thread cutting	M 36	M 36	–	–
Milling capacity in St 60	700 cm ³ /min	700 cm ³ /min	–	–
Spindle drive	28 kW	28 kW	28 kW	28 kW
Increased speed range				
Infinitely variable speed range up to	–	–	16,000 rpm	16,000 rpm
Spindle drive	–	–	31 kW	31 kW
Max. torque	–	–	115 Nm	115 Nm
More Options				
Increased speed range 20 % ED	15,000 rpm	15,000 rpm	15,000 rpm	15,000 rpm
Coolant through the spindle	30 / 70 bar	30 / 70 bar	30 / 70 bar	30 / 70 bar
Coolant treatment	•	•	•	•
Rinsing gun	•	•	•	•
Rotating viewing window	•	•	•	•
NC rotary table	•	–	–	–
NC rotary table with basic device	•	–	–	–
1-spindle, -2-axis NC rotary table	•	–	•	–
2-spindle, -2-axis NC rotary table	•	•	•	•
Zero point clamping system integrated in adapter face plate	–	•	•	•
Face plate	–	•	•	•
Adapter face plate with integrated take-up for ISO/CAT and HSK	–	•	•	•
Workpiece gripper in main spindle	•	•	•	•
Tool life monitoring	•	•	•	•
Tool measurement and management	•	•	•	•
CHIRON Laser Control	•	•	•	•
Tool breakage monitoring	•	•	•	•
Stationary 3-D-probing system	•	•	•	•
Probe	•	•	•	•
Work area mist collection	•	•	•	•
Connection for central mist collection	•	•	•	•
Oil package	•	•	•	•
Machining with minimal lubrication	•	•	•	•
Pneumatic connection for clamping devices	•	•	•	•
Hydraulic unit and connection for clamping devices	•	•	•	•
Automatic doors	•	•	•	•
Handwheel	•	•	•	•
Tool taper	HSK-A 63	HSK-A 63	HSK-A 63	HSK-A 63
Adaptor for multi spindle heads	•	•	•	•
Electrical robot interface	•	•	•	•
Workpiece transport and magazining devices	•	•	•	•
Handling robot and workpiece storage unit	•	•	•	•
Control: Heidenhain	–	•	•	•
Variocell UNO / SYSTEM	•	•	•	•

Machining centers with workpiece changing device

Technical Data	FZ 18 W basket	DZ 18 W basket	FZ18 W MAGNUM chain	DZ 18 W MAGNUM chain
Drilling capacity in St 60 with inserted drill	Ø 42 mm	2 x Ø 36 mm	Ø 42 mm	2 x Ø 42 mm
Thread cutting	M 30	2 x M 24	M 30	2 x M 30
Milling capacity in St 60	500 cm ³ /min	2 x 150 cm ³ /min	500 cm ³ /min	2 x 350 cm ³ /min
Tool places	20	2 x 12	70	2 x 35
Tool taper	SK 40	SK 40	HSK-A 63	HSK-A 63
Max. tool diameter	65 mm	65 mm	78 mm	78 mm
Max. tool diameter if adjacent places are free	180 mm	180 mm	140 mm	140 mm
Max. tool length	220 mm	220 mm	380 mm	380 mm
Max. tool weight	8 kg	8 kg	8 kg	8 kg
Tool change time approx.	0.9 s	0.9 s	0.9 s	0.9 s
Chip-to-chip time approx.	1.9 s	1.9 s	2.2 s	2.2 s
Infinitely variable speed range up to	12,000 rpm	12,000 rpm	12,000 rpm	12,000 rpm
Spindle drive Siemens	18 kW	2 x 23 kW	25 kW	2 x 25 kW
Max. torque Siemens	140 Nm	2 x 95 Nm	140 Nm	2 x 140 Nm
Spindle drive Fanuc	22 kW	2 x 15 kW	22 kW	2 x 22 kW
Max. torque Fanuc	140 Nm	2 x 95 Nm	140 Nm	2 x 140 Nm
Diameter front spindle bearing	70 mm	70 mm	70 mm	70 mm
Tool clamping	8,000 N	8,000 N	20,000 N	20,000 N
Spindle distance in X	–	320 mm	400 mm	400 mm
Travel X- / Y- / Z-axis	730 / 550 / 630 mm	400 / 550 / 630 mm	830 / 530 / 450 mm	630 / 530 / 450 mm
Feed force X- / Y- / Z-axis	5,000 / 5,000 / 10,000 N	5,000 / 5,000 / 10,000 N	7,000 / 7,000 / 12,000 N	7,000 / 7,000 / 12,000 N
Rapid feed rate X- / Y- / Z- axis	75 m/min	75 m/min	75 m/min	75 m/min
Acceleration X- / Y- / Z- axis	10 / 10 / 10 m/s ²	10 / 10 / 10 m/s ²	10 / 14 / 16 m/s ²	10 / 14 / 16 m/s ²
Direct path measuring system in all axis	•	•	•	•
Workpiece changing device with Speed Control	0° / 180°	0° / 180°	0° / 180°	0° / 180°
Camping surface	2 x 940 mm x 520 mm	2 x 940 mm x 520 mm	940 mm x 520 mm	2 x 940 mm x 520 mm
Mounting hole pattern	M16 x Ø 15 H7 x 50mm	M16 x Ø 15 H7 x 50mm	M16 x Ø 15 H7 x 50mm	M16 x Ø 15 H7 x 50mm
Workpiece change time approx.	3.5 s	3.5 s	3.5 s	3.5 s
Load capacity per table sides	400 kg	400 kg	400 kg	400 kg
Chip conveyor, ejection height	1,050 mm	1,050 mm	1,050 mm	1,050 mm
Coolant device, container capacity	150 l	150 l	150 l	150 l
Total connected power approx.	20 kVA	22 kVA	38 kVA	38 kVA
Machine weight approx.	8,5 t	9,0 t	13 t	13 t
Floor space approx.	7.5 m ²	7.5 m ²	10.6 m	10.6 m ²
Air connection	6 bar	6 bar	6 bar	6 bar
Central lubrication	•	•	•	•
Option				
Workpiece changing device with integrated NC rotary tables and Speed Control	0° / 180°	0° / 180°	0° / 180°	0° / 180°
Bridge dimension	Ø 570 x 800 mm	Ø 570 x 800 mm	Ø 570 x 900 mm	Ø 570 x 900 mm
Workpiece change time approx.	3.5 s	3.5 s	3.5 s	3.5 s
Load capacity per table side	250 kg	250 kg	250 kg	250 kg

Options	FZ 18 W basket	DZ 18 W basket	FZ 18 W MAGNUM chain	DZ 18 W MAGNUM chain
More powerful spindle drive				
Infinitely variable speed range up to	10,500 rpm	10,500 rpm	–	–
Spindle drive Siemens	26 kW	2 x 18 kW	–	–
Max. torque	300 Nm	2 x 140 Nm	–	–
Spindle drive Fanuc	31,5 kW	2 x 22 kW	–	–
Max. torque Fanuc	300 Nm	2 x 150 Nm	–	–
Drilling capacity in St 60 with inserted drill	Ø 50 mm	2 x Ø 42 mm	–	–
Thread cutting	M 36	2 x M 30	–	–
Milling capacity in St 60	700 cm ³ /min	2 x 350 cm ³ /min	–	–
More powerful spindle drive				
Infinitely variable speed range up to	12,000 rpm	12,000 rpm	12,000 rpm	12,000 rpm
Spindle drive	28 kW	28 kW	28 kW	28 kW
Max. torque	180 Nm	180 Nm	180 Nm	180 Nm
Increased speed range				
Infinitely variable speed range up to	–	–	16,000 rpm	16,000 min ⁻¹
Spindle drive	–	–	31 kW	2 x 31 kW
Max. torque	–	–	115 Nm	2 x 115 Nm
More Options				
Increased speed range 20 % ED	15,000 rpm	15,000 rpm	15,000 rpm	15,000 rpm
Coolant through the spindle	30 / 70 bar	30 / 70 bar	30 / 70 bar	30 / 70 bar
Coolant treatment	•	•	•	•
Rinsing gun	•	•	•	•
Rotating viewing window	•	•	•	•
NC rotary table	•	•	–	–
NC rotary table with basic device	•	•	–	–
Workpiece changer with integrated NC rotary table	•	•	Standard	Standard
Workpiece changer with 2 integrated 2-spindle 2-axis tables	•	•	•	•
Workpiece gripper in main spindle	•	•	•	•
Background magazin toolplaces	–	–	139	74
Tool life monitoring	•	•	•	•
Tool measurement and management	•	•	•	•
CHIRON Laser Control	•	•	•	•
Tool breakage monitoring	•	•	•	•
Stationary 3-D-probing system	•	•	•	•
Probe	•	•	•	•
Work area mist collection	•	•	•	•
Connection for central mist collection	•	•	•	•
Oil package	•	•	•	•
Machining with minimal lubrication	•	•	•	•
Pneumatic connection for clamping devices	•	•	Standard	Standard
Hydraulic unit and connection for clamping devices	•	•	•	•
Automatic doors	•	•	•	•
Handwheel	•	•	Standard	Standard
Tool taper	HSK-A 63	HSK-A 63	HSK-A 63	HSK-A 63
Adaptor for multi spindle heads	•	•	•	•
Electrical robot interface	•	•	•	•
Workpiece transport and magazining devices	•	•	•	•
Handling robot and workpiece storage unit	•	•	•	•
Variocell UNO / SYSTEM	•	•	–	–

Wheel machining centers

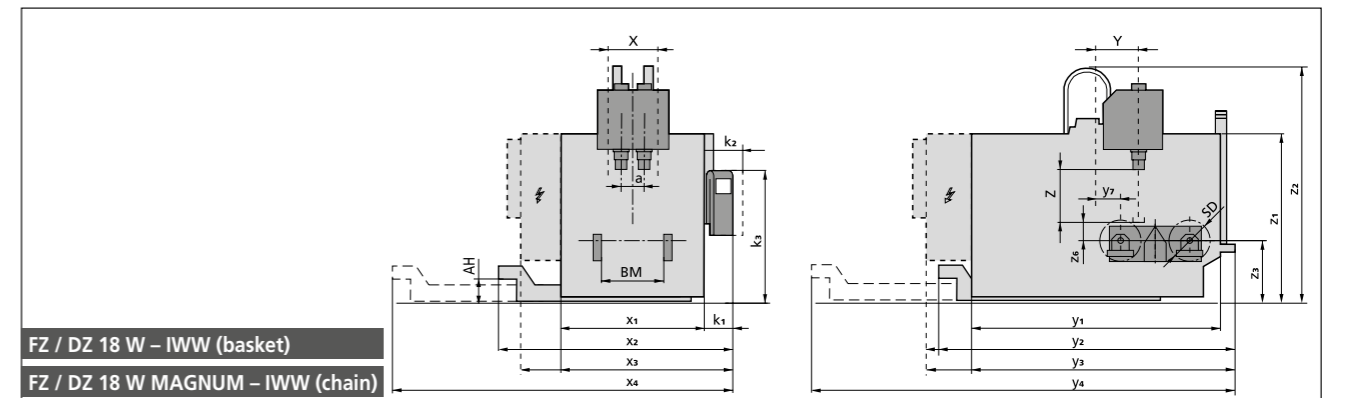
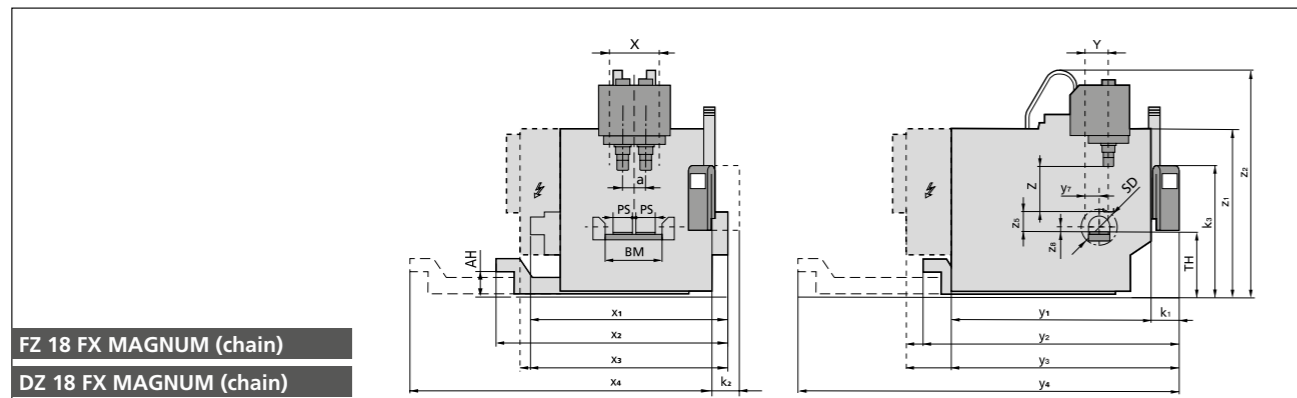
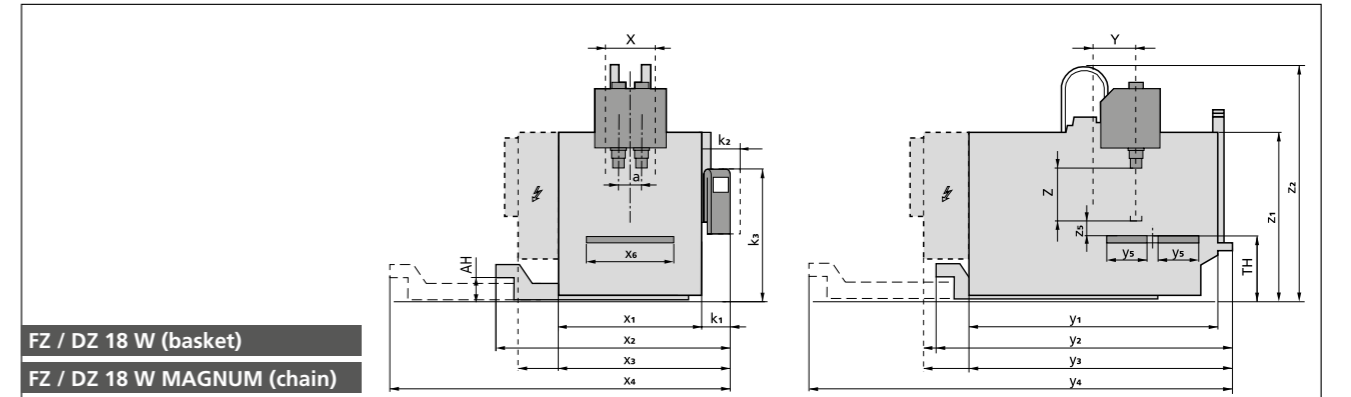
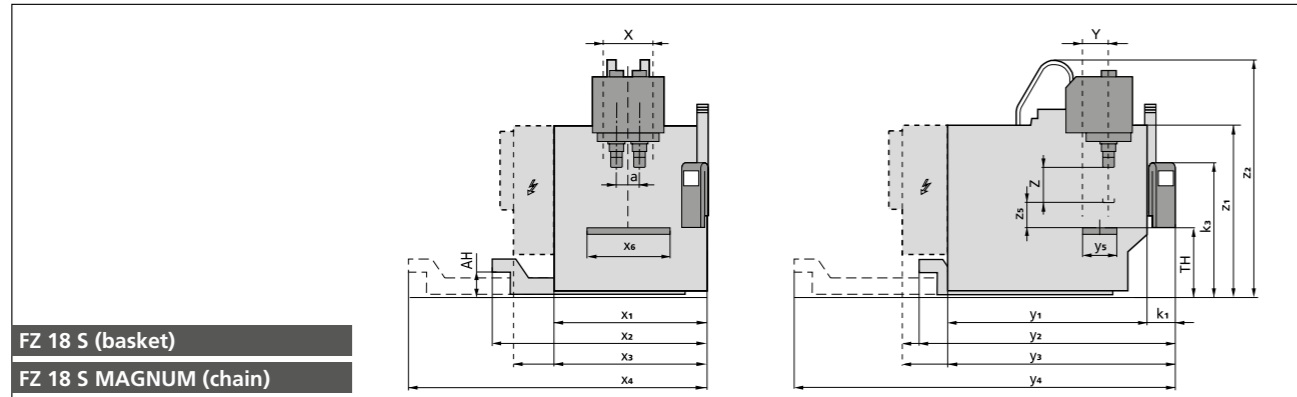
Technical Data	FZ 18 S WHEEL	FZ 18 W WHEEL
Drilling capacity in St 60 with inserted drill	Ø 42 mm	Ø 42 mm
Thread cutting	M 30	M 30
Milling capacity in St 60	500 cm ³ /min	500 cm ³ /min
Tool places	12 / 20	12 / 20
Tool taper	SK 40	SK 40
Max, tool diameter	65 mm	65 mm
Max, tool diameter if adjacent places are free	180 mm	180 mm
Max, tool weight	8 kg	8 kg
Tool change time approx.	0.9 s	0.9 s
Chip-to-chip time approx.	1.9 s	1.9 s
Infinitely variable speed range	12,000 rpm	12,000 rpm
Spindle drive Siemens	18 kW	18 kW
Max, torque Siemens	140 Nm	140 Nm
Spindle drive Fanuc	22 kW	22 kW
Max. torque Fanuc	140 Nm	140 Nm
Diameter front spindle bearing	70 mm	70 mm
Tool clamping	8,000 N	8,000 N
Travel X / Y / Z axis	730 / 550 / 630 mm	730 / 550 / 630 mm
Feed force X / Y / Z axis	5,000 / 5,000 / 10,000 N	5,000 / 5,000 / 10,000 N
Rapid feed rate X / Y / Z axis	75 m/min	75 m/min
Acceleration X / Y / Z axis	10 / 10 / 10 m/s ²	10 / 10 / 10 m/s ²
Direct path measuring system in all axis	•	•
Fixed table		
With integrated wheel device	14" - 25"	–
Table load capacity	1,200 kg	–
Workpiece changing device with Speed Control	–	0° / 180°
With integrated wheel device	–	14" - 22"
Clamping surface	–	2 x 940 mm x 520 mm
Mounting hole pattern	–	M16 xØ15 H7 x 50mm
Workpiece change time approx.	–	3.5 s
Load capacity per table side	–	250 kg
Chip conveyor, ejection height	1,050 mm	1,050 mm
Coolant device, container capacity	150 l	150 l
Total connection power approx.	20 kVA	27 kVA
Machine weight approx.	7.0 t	7.5 t
Floor space approx.	7.3 m ²	8.7 m ²
Air connection	6 bar	6 bar
Central lubrication	•	•

Options	FZ 18 S WHEEL	FZ 18 W WHEEL
More powerful spindle drive		
Infinitely variable speed range up to	10,500 rpm	10,500 rpm
Spindle drive Siemens	26 kW	26 kW
Max. torque	300 Nm	300 Nm
Spindle drive Fanuc	31.5 kW	31.5 kW
Max. torque Fanuc	300 Nm	300 Nm
Drilling capacity in St 60 with inserted drill	Ø 50 mm	Ø 50 mm
Thread cutting	M 36	M 36
Milling capacity in St 60	700 cm ³ /min	700 cm ³ /min
More Options		
Increased speed range 20 % ED	15,000 rpm	15,000 rpm
Coolant through the spindle	30 / 70 bar	30 / 70 bar
Coolant treatment	•	•
Rinsing gun	•	•
Rotating viewing window	•	•
Tool life monitoring	•	•
Tool measurement and management	•	•
CHIRON Laser Control	•	•
Tool breakage monitoring	•	•
Stationary 3-D-probing system	•	•
Probe	•	•
Work area mist collection	•	•
Connection for central mist collection	•	•
Oil package	•	•
Machining with minimal lubrication	•	•
Pneumatic connection for clamping devices	•	•
Hydraulic unit and connection for clamping devices	•	•
Automatic doors	•	•
Handwheel	•	•
Tool taper	HSK-A 63	HSK-A 63
Electrical robot interface	•	•

Dimensions

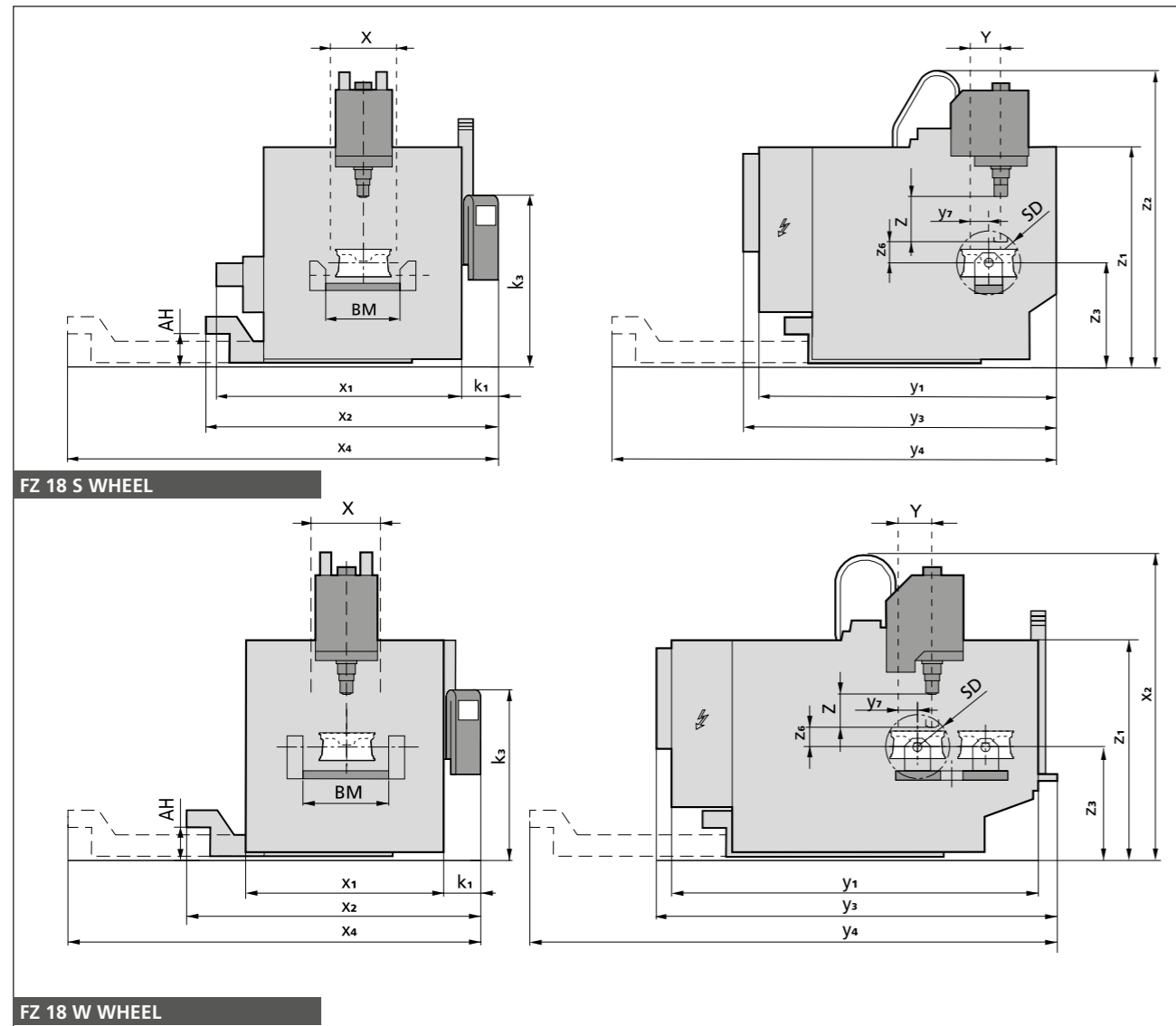
18 Series	FZ 18 S basket	FZ 18 FX basket	FZ 18 FX MAGNUM chain	DZ 18 FX MAGNUM chain
a Spindle distance	–	–	–	400 mm
AH Ejection height chip conveyor	490 mm	490 mm	1,050 mm	1,050 mm
BM Bridge dimension	–	950 mm	1,130 mm	1,130 mm
k1 Control panel depth	370 mm	370 mm	370 mm	370 mm
k2 Control panel depth swivelled	–	360 mm	360 mm	360 mm
k3 Control panel height	1,900 mm	1,900 mm	1,900 mm	1,900 mm
PS Face plate diameter	–	280 mm	400 mm	280 mm
SD Max, interference area diameter	–	790 mm	800 mm	810 mm
TH Height face plate / rotary table centre	770 mm	880 mm	810 mm	800 mm
X Travel X axis	730 mm	730 mm	830 mm	630 mm
x1 Cabin width	1,900 mm	2,625 mm	2,790 mm	2,790 mm
x2 Cabin Total width with chip conveyor to the side	3,800 mm	3,880 mm	4,100 mm	4,100 mm
x3 Total width with chip conveyor to back	1,900 mm	2,625 mm	3,050 mm	3,050 mm
x4 Total width with chip conveyor pulled out	5,130 mm	5,210 mm	5,500 mm	5,500 mm
x6 Clamping surface width	1,060 mm	–	–	–
Y Travel Y axis	550 mm	550 mm	530 mm	530 mm
y1 Cabin depth	3,690 mm	3,690 mm	3,390 mm	3,390 mm
y2 Total depth with chip conveyor to back	4,210 mm	4,210 mm	5,580 mm	5,580 mm
y3 Total depth with chip conveyor to the side	4,210 mm	4,210 mm	4,170 mm	4,170 mm
y4 Total depth with chip conveyor pulled out	5,010 mm	5,010 mm	7,900 mm	7,900 mm
y5 Clamping surface - depth	430 mm	–	–	–
y7 Furthest distance Y Position - A Axis	–	335 mm	335 mm	335 mm
Z Travel Z axis, spindle vertical	630 mm	630 mm	450 mm	450 mm
z1 Cabin height	2,340 mm	2,340 mm	2,340 mm	2,340 mm
z2 Total height	3,140 mm	3,140 mm	3,300 mm	3,300 mm
z5 Deepest spindle position (distance)– Clamping / Faceplate	240 mm	130 mm	240 mm	240 mm
z8 Clearance face plate - swivel axis	–	100 mm	100 mm	100 mm

Technical Data	FZ 18 W basket	DZ 18 W basket	FZ 18 W MAGNUM chain	FZ 18 W IWW MAGNUM chain	DZ 18 W MAGNUM chain	DZ 18 W IWW MAGNUM chain
a Spindle distance	–	320 mm	–	–	400 mm	400 mm
AH Ejection height chip conveyor min.	490 mm	490 mm	1,050 mm	1,050 mm	1,050 mm	1,050 mm
BM Bridge dimension	800 mm	800 mm	–	900 mm	–	900 mm
k1 Control panel depth	370 mm	370 mm	370 mm	370 mm	370 mm	370 mm
k2 Control panel depth - swivelled	–	–	360 mm	360 mm	360 mm	360 mm
k3 Control panel height	1,900 mm	1,900 mm	1,900 mm	1,900 mm	1,900 mm	1,900 mm
SD Max. interference area diameter	–	–	–	570 mm	–	570 mm
TH Height face plate / rotary table centre	770 mm	770 mm	770 mm	920 mm	770 mm	920 mm
X Travel X axis	730 mm	400 mm	830 mm	930 mm	630 mm	630 mm
x1 Cabin width	1,900 mm	1,900 mm	2,080mm	2,080mm	2,080mm	2,080mm
x2 Cabin Total width with chip conveyor to the side	4,040 mm	4,040 mm	4,150 mm	4,150 mm	4,150 mm	4,150 mm
x3 Total width with chip conveyor to back	2,270mm	2,270 mm	3,090 mm	3,090 mm	3,090 mm	3,090 mm
x4 Total width with chip conveyor pulled out	5,360 mm	5,360 mm	5,540 mm	5,540 mm	5,540 mm	5,540 mm
x6 Clamping surface width	940 mm	940 mm	940 mm	–	940 mm	–
Y Travel Y axis	550 mm	550 mm	530 mm	530 mm	530 mm	530 mm
y1 Cabin depth	4,120 mm	4,120 mm	4,080 mm	4,080 mm	4,080 mm	4,080 mm
y2 Total depth with chip conveyor to back	4,400 mm	4,400 mm	6,190 mm	6,190 mm	6,190 mm	6,190 mm
y3 Total depth with chip conveyor to the side	4,500 mm	4,500 mm	5,390 mm	5,390 mm	5,390 mm	5,390 mm
y4 Total depth with chip conveyor pulled out	5,300 mm	5,300 mm	8,510 mm	8,510 mm	8,510 mm	8,510 mm
y5 Clamping surface - depth	2 x 520 mm	2 x 520 mm	2 x 520 mm	–	2 x 520 mm	–
y7 Furthest distance Y Position - A Axis	–	–	–	290 mm	–	290 mm
Z Travel Z axis , spindle vertical	630 mm	630 mm	450 mm	450 mm	450 mm	450 mm
z1 Cabin height	2,340 mm	2,340 mm	2,340 mm	2,340 mm	2,340 mm	2,340 mm
z2 Total height	3,140 mm	3,140 mm	3,300 mm	3,300 mm	3,300 mm	3,300 mm
z3 Height of swivel axis	–	–	–	975	–	975
z5 Deepest spindle position (distance) – Clamping / Faceplate	240 mm	240 mm	280	–	280	–
z6 Deepest spindle position - swivel axis	–	–	–	75	–	75



Dimensions

Series 18	FZ 18 S WHEEL	FZ 18 W WHEEL
AH Ejection height chip conveyor min	490 mm	490 mm
BM Bridge dimension	1,020 mm	760 / 800 mm
k1 Control panel depth	370 mm	370 mm
k3 Control panel height	1,900 mm	1,900 mm
X Travel X axis	790 mm	782 mm
x1 Cabin width	730 mm	730 mm
x2 Cabin Total width with chip conveyor to the side	2,280 mm	1,900 mm
x4 Total width with chip conveyor pulled out	4,040 mm	4,040 mm
z9 Travel Z axis, spindle horizontal	5,360 mm	5,360 mm
Y Travel Y axis	550 mm	550 mm
y1 Cabin depth	3,840 mm	4,120 mm
y3 Total depth with chip conveyor to the side	3,690 mm	4,500 mm
y4 Total depth with chip conveyor pulled out	4,640 mm	5,300 mm
y7 Furthest distance Y Position - A axis	280 mm	294 mm
Z Travel Z axis	630 mm	630 mm
z1 Cabin height	2,340 mm	2,340 mm
z2 Total height	3,140 mm	3,140 mm
z3 Height of swivel axis	910 mm	1,210 mm
z6 Deepest spindle position - swivel axis	100 mm	200 mm



Series 18 – Options

More powerful spindle drive
Spindle position adjustment
Coolant through the spindle
Coolant treatment
Rinsing gun
Rotating viewing window
NC rotary table
NC rotary table with basic device
1-spindle, -2-axis NC rotary table
2-spindle, -2-axis NC rotary table
Workpiece changing device with integrated NC rotary table
Workpiece changing device with 2 integrated 2-spindle 2-axis tables
Zero point clamping system integrated in adapter face plate
Face plate
Adapter face plate with integrated take-up for ISO/CAT and HSK
Workpiece gripper in main spindle
Tool life monitoring
Tool measurement and management
CHIRON Laser Control
Tool breakage monitoring
Stationary 3-D-probing system
Background magazin up to 139 tool places
Probe
Work area mist collection
Connection for central mist collection
Oil package
Machining with minimal lubrication
Pneumatic connection for clamping devices
Hydraulic unit and connection for clamping devices
Automatic doors
Handwheel
Adaptor for multi spindle heads
Electrical robot interface
Workpiece transport and magazing devices
Handling robot and workpiece storage unit
Variocell UNO / SYSTEM

Basic series

08 Series

Fast, compact machining centers for high precision and various applications

12 Series

Fast, compact single, double-spindle and multi-functional precision machining centers

15 Series

Fast and powerful precision machining centers for profitable production – with one, two or four spindles

18 Series

Powerful, single and twin-spindle machining centers for high-speed machining and heavy cutting

24 Series

Powerful, single and double spindle machining centers for high-productive machining of large workpieces

MILL Series

Universal precision machining centers for high performance cutting - from small parts to large workpieces

Flexible production systems

Variocell UNO

Robot-automated 6-side complete machining

Variocell SYSTEM

Customized automation solutions

CHIRON subsidiaries

CHIRON Technologies de Production SAS

14 Chemin de la Litte
92390 Villeneuve-la-Garenne, France
Tel. +33 1479 859 50, Fax -854 31
info@chiron-technologies.fr
www.chiron-technologies.fr

CHIRON Italia S.p.A.

Via Ambrosoli 4/C
20090 Rodano Millepini – MI, Italy
Tel. +39 02-953 211 02, Fax -286 20
info@chironitalia.it
www.chironitalia.it

CHIRON Istanbul

Makine Ticaret ve Servis Ltd. Şti.
MURAT PAŞA MAHALLESİ ULUYOL
Caddesi No:19 İSTANBUL TOWER
Plaza Kat:13 D:59-60
34040 Bayrampaşa - İSTANBUL, Turkey
Tel. +90 212 612 12 11
Fax +90 212 612 48 28
info@chiron-turkey.com
www.chiron-turkey.com

CHIRON Polska Sp. z o.o.

ul. Darwina 42
44-177 Paniowki, Poland
Tel. +48 32 790 98 50
info@chiron-poland.com
www.chiron-poland.com

CHIRON Machine Tool

(Beijing) Ltd., China
Room 1805, NUO Office,
A2 Jiangtai Road, Chaoyang District
Beijing 100016, P.R. China
Tel +86 10 6598 9811
Fax +86 10 6598 9812
info(at)chiron-china.com
www.chiron-china.com

CHIRON Machine Tool (Taicang) Co., Ltd.

No. 1-1, Fada Road
Technological Development Zone,
Taicang 215413, Jiangsu Province,
P.R. China
Tél. +86 512 5367 0800, Fax -0808
info@chiron-china.com
www.chiron-china.com

CHIRON America INC.

10950 Withers Cove Park Drive
Charlotte, NC 28278, USA
Tel. +01 704 587 95 26
Fax +01 704 587 04 85
info@chironamerica.com
www.chironamerica.com

Detroit Office

44692 Helm Street
Plymouth, MI 48170
Tel +01 734 233 9650
Fax +01 704 587 0485
info@chironamerica.com
www.chironamerica.com

CHIRON India Machine Tools Private Limited

#33, Naseer Affinity, 1st Floor
Miller Tank Bund Road, Kaveriappa Layout
Vasanth Nagar, Bangalore - 560 052, India
Tel. +91 80 4905 6490, Fax -6450
info@chiron-india.com
www.chiron-india.com

CMS-GmbH

Gewerbepark „take-off“ 125
78579 Neuhausen ob Eck, Germany
Tel. +49 7461 940-3700, Fax -53701
cms@chiron.de
www.pre-owned-machines.com

CHIRON Werke GmbH & Co. KG

Kreuzstrasse 75
78532 Tuttlingen, Germany
Tel. +49 7461 940-0
Fax +49 7461 940-53000
info@chiron.de